

Pax Climb 500x1000, white

Cat. Part	24-5202
Number	
EAN 13	7350020452024
SE EL (SEG)	9412184
SE VVS (RSK)	8755294
NO EL (EFO)	5834120
NO VVS (NRF)	6553448
FI VVS (LVI)	5487733
DK EL (DB)	2006623
DK VVS (VVS)	331178110
FI EL (SNRO)	8133126

- Classic ladder model

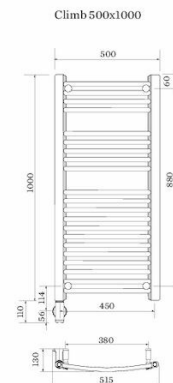
Climb combi warmer. With 500 mm, height 1000 mm. Made of white powder-coated steel. 1/2 inch connection.



Technical data

Installation type, wall, ceiling etc	Wall
Unpackaged Product Width (mm)	500
Unpackaged Product Height (mm)	1000
Unpackaged Product Depth (mm)	130
Material	Steel
Etim Code	EC011023

Measure sketch/CAD



Description

Climb is a combi warmer in a classic ladder design, with plenty of gently rounded cross-tubes. Available in chrome or white as standard.

Pax combi warmers are filled with water on installation, and are either heated with a Pax electric element with the unique Momento II™ timer and/or by connecting to your existing closed heating system via radiator valve.

Width: 500 mm

Height: 1000 mm

Finish: Lacquer white tubes

Material: Steel

Connection point: Bottom, right/left

Supplied: Unfilled with hanging fixtures, screws, plugs, blind plugs and airing valve.

Also required: Pax electric element with Momento II™ timer 175W, half-inch thread and/or Radiator valve

Accessories



Electric element, 175W Momento II™

Cat 28-1014



Unearthed cable rack

Cat 8340-5



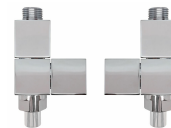
RFA 75-400 radiator valve with knob

Cat 29-1051



Radiator valve, square, straight

Cat 8332-1



Radiator valve, square, angled

Cat 8332-3



Radiator valve, round, straight

Cat 8332-5



Radiator valve, round, angled

Cat 8332-7



Radiator valve, corner

Cat 8332-9



Radiator valve, cylinder

Cat 8333-2



Radiator valve, minimal cross

Cat 8333-4